



Bakke Land Posten

Texas Hill Country News

Sons of Norway - Cleng Peerson Lodge #1-645

January 1998

Vol. 3 No.1

Godt Nyttar!!

This past year was our first full year as Sons of Norway Cleng Peerson Lodge #1-645. What a great year it has been! The new year of 1998 promises to be every bit as exciting. The S/N social meeting on January 26 will be the last time that we will meet on the fourth Monday of the month. Saturday, February 14, is the first anniversary of our lodge. We will celebrate this occasion then, along with a Valentines Day pot luck. Festivities will begin at 4:00 pm at Ascension Lutheran Church. Plans are under way for that big event now. We are changing our meeting day to the third Monday beginning on March 16th. This change of meeting date was discussed at last November's social meeting and was deemed not to be a conflict with the 20 or so of our members that were present. Next, Viking Fest '98 will be April 25-26 in Georgetown, Texas, so there will be no S/N social meeting either in April or in May. We again plan to join with the Norwegian Society of Texas for the Syttende Mai celebration. Please mark your calendars now for these events.

I want to take this opportunity to thank all of our faithful membership and the 1997 S/N officers for their tireless contributions to our lodge. As seems to be the case in every organization, large or small, the majority of the hard work is done by a relatively small fraction of its membership. Our ladies deserve special praise for all of the cooking they have done for us (oh, how we look forward to that every month!) and for all of the cleanup that they have shouldered. I won't mention all of you by name but we all know who you are and how you have labored.

The January 26 S/N social meeting will feature a talk by John Follesdal at the University of Texas-Austin. John will talk to us about searching your Norwegian genealogy. He has the most active genealogy Web site with about 3000 hits per month. It can be accessed at <http://www.geocities.com/Heartland/Plains/5100>. John's e-mail address is: John.Follesdal@mail.utexas.edu

We will also be conducting a membership drive in 1998. If you are not a member of our lodge, please consider completing the membership form that has been sent to you along with this newsletter. You may give or send it to me or one of the other officers. If you already are a member you should have received your 1998 dues notice from the central office in Minneapolis. I think that everyone agrees that just receiving the superb monthly magazine, *Viking*, is well worth the membership fee. But, what price can be put on our Norwegian camaraderie and great food?

See you on January 26.

Fred

Fred Bolgen (512) 873-8786

The 1997 Juletreffest

Our Jultreffest at Shepherd of the Hills Lutheran on December 11 was truly special. Lots of very hard work was put into it to make it a success. Dick Soiseth and Signe Griffin really went all out in providing the main course of pork ribs and sauerkraut. Carol DeBoe, Lewis Stimson, and Leila Tackett peeled tons of potatoes. Signe's Christmas decorations were very festive. The singing of the "Lefse Song" was lots of fun! Thanks to Don Nedrud for organizing the entertainment. Julenissen made a special appearance much to the joy of all of the children. The dancing around the Christmas tree was the culmination of a great night. It is always a delight to introduce the children to the legends of the Norwegian Christmas! Our joint celebration with our good friends in the Norwegian Society of Texas was a memorable event!!

SON Training Seminar

Our officers and other interested members are invited to attend a training session with other Texas lodges on Saturday, February 28th from 10:00 a.m. to 3:30 p.m. It will be held in Round Rock at the K-Bob's Steak House (1210-Z North IH35). South Dakota's Marvin Hanson, Vice President of District 1, will be conducting the learning activities.

Officers Needed

Currently vacant positions in our lodge are: Cultural Director, Assistant Cultural Director, Food Coordinator, Music Director, and Publicity Director. Please volunteer!

Membership Drive and Fund Raising

In our 1997 inaugural year, 100% of the dues were returned to our lodge. That has ended and we have to be self-supporting now. We are considering having a fund-raising auction and possibly having local dues of \$10. We want to bring this question before the membership for a vote at the March social meeting. Please let us know if you can think of ways to help increase our meager coffers. The main expenses that we have are the newsletter and rental for the monthly meetings.

We will conduct a membership drive this year. A membership form has been enclosed with this newsletter. If you currently a member please try to recruit a new member. If you are not a member and have been receiving the newsletter this year, please consider joining Cleng Peerson Lodge #1-645 or let us know if you wish to have your name taken off the mailing list.

Ole and His Tax Advisor

The tax consultant told Ole. "Your signature is all that is required on your tax return. "Cross my heart and hope to die" is not necessary!!"

[Ya Sure, Ya Betcha! UFF-DA #3, 206 3/4 Scandinavian Jokes, Charlene Power, Crosby ND, 1981.]

"Honest" Lena

"Lena, vot would yu dew if yew found a million dollars?"
asked Ole
"Vell," said honest Lena, "If it vas lost by a poor person, I'd give it back!"

Sons of Norway Map Service

Through a partnership with the Norwegian Mapping Authority, Sons of Norway is now able to offer the most up-to-date, detailed maps of Norway. Four types of maps are available:

- # Full size map of the entire country of Norway for armchair travelers (#2274)
- # Road maps for travelers (21 maps of different sections of Norway)
- # Topographical maps for family history researchers (727 maps of different sections of Norway showing such details as farms and churches)
- # Antique map reproductions for artistic map enthusiasts (several available)

Sons of Norway members receive their maps at a discounted price.

Sons of Norway, 1445 W. Lake St., Minneapolis, MN 55408

800/945-8851 or 612/827-3611; fax 612/827-0658; e-mail cstorlie@sofn.com

1997 Photo Review - continued



**Annalyn Bryant and son, Brandon
- Oct 1997**



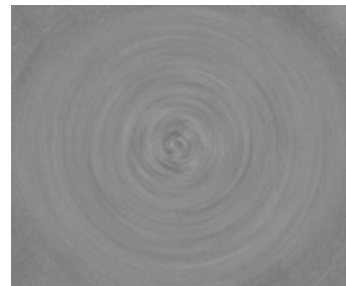
Russ "Bjarni" Larsen - Editor



**Lewis Stimson and Ray
Tackett - Christmas 1997**



**Mysterious Julenissen (to right)
(The developer said that this
was the best he could do!) -
Christmas Party 1997**



Leif Erikson Day 1997



**Bjarni Skit
Russ Bjarni Larsen, Ray Hagar Tackett,
Leila Ingaborg Tackett, Emil Leif
Svenkerud, Erik Svenkerud (Narrator)
Leif Erikson Day 1997**



Carol DeBoe - Secretary



Fred Bolgen - President



Don Nedred - Social Director

Danish vs. Norwegian Seafood

[transmitted via NORWAY-L@rootsweb.com (BL-14.rootsweb.com) by Michael Landmark (landmark@inet.uni-c.dk), a Norwegian living in Denmark for more than 30 years]

“In the warm and sheltered water of Kattogat in the south, along the fjords of the western coast facing the stormy North Sea, all the way up to the far north, above the Polar Circle to the Arctic Ocean, the Norwegians have always harvested the mainstay of their daily menu: the myriad of seafood specialties that first and foremost make a Norwegian table unique. Continental demand in the Middle Ages for dried cod was the impetus that drove merchants from north Germany (Hanseatene) to Bergen where they monopolized trade and made their mark on Norwegian history. Today the Norwegians have successfully put salmon on the tables of Europe through their advanced production methods and two young men who brought their native skills to bear on the Pacific fishing fleets have made such a fortune that a couple of years ago they took over one of the largest combines of Norway. So fishing is and always has been central to my country.”

“In Denmark scrimps are usually served as a special delicacy when they have been picked (cleaned) in a large stack with lots of deco on a sandwich. In Norway one buys the freshly cooked scrimp from the deck of the fisherman’s boat (they even come into the harbor of Oslo having cooked the scrimp in the morning on their way in from the sea) and enjoys them quayside picking them as you eat them. Or, you bring home a large quantity and serve them as they are with toast and mayonnaise for a “rekeaften” (scrimp party) with cool white wine.”

“Eel is not really regarded by Norwegian fisherman as a valuable catch. Danes however, having long stretches of shallow water, are specialists in the art of catching, preparing, and serving eel, oysters, and shellfish. They even go to Norwegian waters, catch excellent eel, pack it and sell it back to the Norwegians as a Danish Specialty! No wonder they are called “the merchants of the North!”

“The Danes generally serve fish in a totally different way — when they deviate from their beloved roasted pork! Take cod: while we gladly enjoy this marvelous fish just plainly cooked (oops never cook it, just let it simmer a few minutes in newly cooked salted water with a couple of laurel leaves in it) in one inch thick slices (cut across the spine) including the head and liver, of course, and serve it with just cooked potatoes and melted butter (perhaps with a little crisp bacon on the side - if you originate from Romsdal). The Danes seem to think that the proper thing to do is to serve only a small amount of cod, garnished with all sorts of pickles and sauces, vegetables and what-have-you. For a Norwegian, this is tantamount to heresy! One can hardly taste the cod!”

Lutefisk impact

640 tons of lutefisk were consumed in private homes in Norway last Christmas and 1,000 tons in the restaurant sector. The Norwegian Seafood Export council predicts a nearly 40% rise in lutefisk sales this year.

(Dagbladet, reported in Western Viking, 1/2/98)

1997 Photo Review



International Children's Festival

Leila Tackett, Linda Pierson, and Annalyn Bryant - Sept 1997



Making Christmas Decorations

Linn, Leslie and Erika Ward - Nov 1997



November 1997 Social Meeting

Viking Fest '98

Viking Fest '98 will be held in Georgetown, Texas on April 25 & 26, 1998 in Riverside San Gabriel Park. The event celebrates the settlement and contributions by the Norwegians, Icelanders, Danes, Finns, and Swedes who have enriched the heritage of Texas and America.

Two days of Fun for your Family
No parking/gate charge-NONE!
Lively Northland music

Virmo Pelimannit, 7-piece folk music band from Finland

Rock'n Richie and the Dentones from Denton
Swedish folk music group Svardsjo Spelmanslag
Barkaryd Church choir from Sweden
NST Leikarringen and Skandi dancers

Vesterheim Museum display
Valborgsmassoafton celebration
Public dance-Saturday evening
Raffles and games galore!
Displays of Nordic Heritage
Cloetta Chocolate wheel

DRAWINGS for SAS Airline tickets and a cruise on
Norwegian Cruise Lines

Tug-of-War between Nordic teams
Authentic Nordic arts and crafts
Children's games
Souvenir Program
and FOOD-FOOD-FOOD
Fun for the whole family

The following hotels and Thrifty Car offer reduced rates for Viking Fest visitors. Please make your reservations directly with the hotels listed.

Comfort Inn 512/863-7504
Days Inn 512/863-5572
La Quinta Inn 512/869-2541

Need Additional Information?
Call Georgetown Visitors Bureau.
512/930-3545 or 1-800/436-8696

For the those with January Birthdays

Happy Birthday! Gratulerer med fodselsdagn!
(grah-tew-LEHR-er meh FERDS-els-dah-en!)

Coming Events

- Jan 16** SON Founder's Day, 1895
- Jan 26** Social Meeting, John Follesdal, U of Texas
- Norwegian Genealogy
- Feb 14** Saturday - First Anniversary of SON Cleng
Peerson Lodge #1-645 - Festivities begin at
4:00 p.m.; Pot Luck Dinner at 5:00 p.m.;
Bring a homemade Valentine Card.
Tell Personal Valentine Story.
For Pot Luck: A - M bring main dish and
N - Z bring side dish. No lutefisk please!!!
- Mar 16** Social Meeting, Ascension Lutheran
- Apr 25-26** Viking Fest '98, Georgetown TX,
Riverside San Gabriel Park
- May 17** Syttende Mai

Know Your Benefits...

Scholarships

The Sons of Norway Foundation has offered financial support to hundreds of students over the past 13 years. Scholarships available include:

- King Olav V Norwegian-American Heritage Fund
- Astrid G. Cates Fund
- Nancy Lorraine Jensen Memorial Scholarship Fund
- Oslo International Summer School Fund
- Camp Norway—Deadline: April 1, 1998.

Criteria and awards vary for each of the different scholarships. Unless indicated otherwise, scholarship deadlines are March 1, 1998. To donate to a scholarship fund or to receive guidelines and application forms, contact:

Sons of Norway Foundation
1455 West Lake Street
Minneapolis, MN 55408

Congratulations!!!

Engagement! Gratulerer med forlovelse!
Pamela Erickson and Michael Knott - July 18, 1998

**Sons of Norway
Cleng Peerson Lodge #1-645
Austin, Texas
Instituted February 14, 1997**

Mission statement. The mission of Sons of Norway is to promote, preserve, and cherish a lasting appreciation of the heritage and culture of Norway and other Nordic countries while growing soundly as a fraternal benefit society and offering maximum benefits to its members.

President	Fred Bolgen	873-8786
Vice President	Erik Svenkerud	451-2735
Secretary	Carol DeBoe	331-0095
Treasurer	Leila Tackett	327-5397
Financial Secretary	Philmon Erickson	244-4977
Social Director	Don Nedrud	869-2852
Food Coordinator	Vacant - NEW	
Cultural Director	Vacant	
Ass't Cultural Director	Vacant - NEW	
Editor	Russ Larsen	346-5570
Publicity Director	Vacant - NEW	
Historian	Mary Nedrud	869-2852
Marshall	J. Lewis Stimson	331-0095
Music Director	Vacant - NEW	
Counselors	Bob and Sandy Helle	238-6600



Group Photo at October 1997 Social Meeting

Leftover lutefisk

Do you still have lutefisk left over from Christmas?
For goodness sakes, throw it out!!
Uff Da!

The January Social Meeting will be on

Monday, January 26th (7:00 pm)

at the Ascension Lutheran Church in Austin.

(6420 Hart Lane, corner of Balcones overlooking MOPAC, between 2222 and Far West)

GENEALOGY NUGGETS!!!

John Follesdal, University of Texas - Austin

BRING GODTER OG MATBIT (GOODIES AND SNACKS!)

Sons Of Norway

Cleng Peerson Lodge #1-645

c/o Editor

P.O. Box 650042

Austin, Texas 78765

